

ARI'I 'e te pa'ati hōhonu

Annie SOSSEY
Carine THIERRY

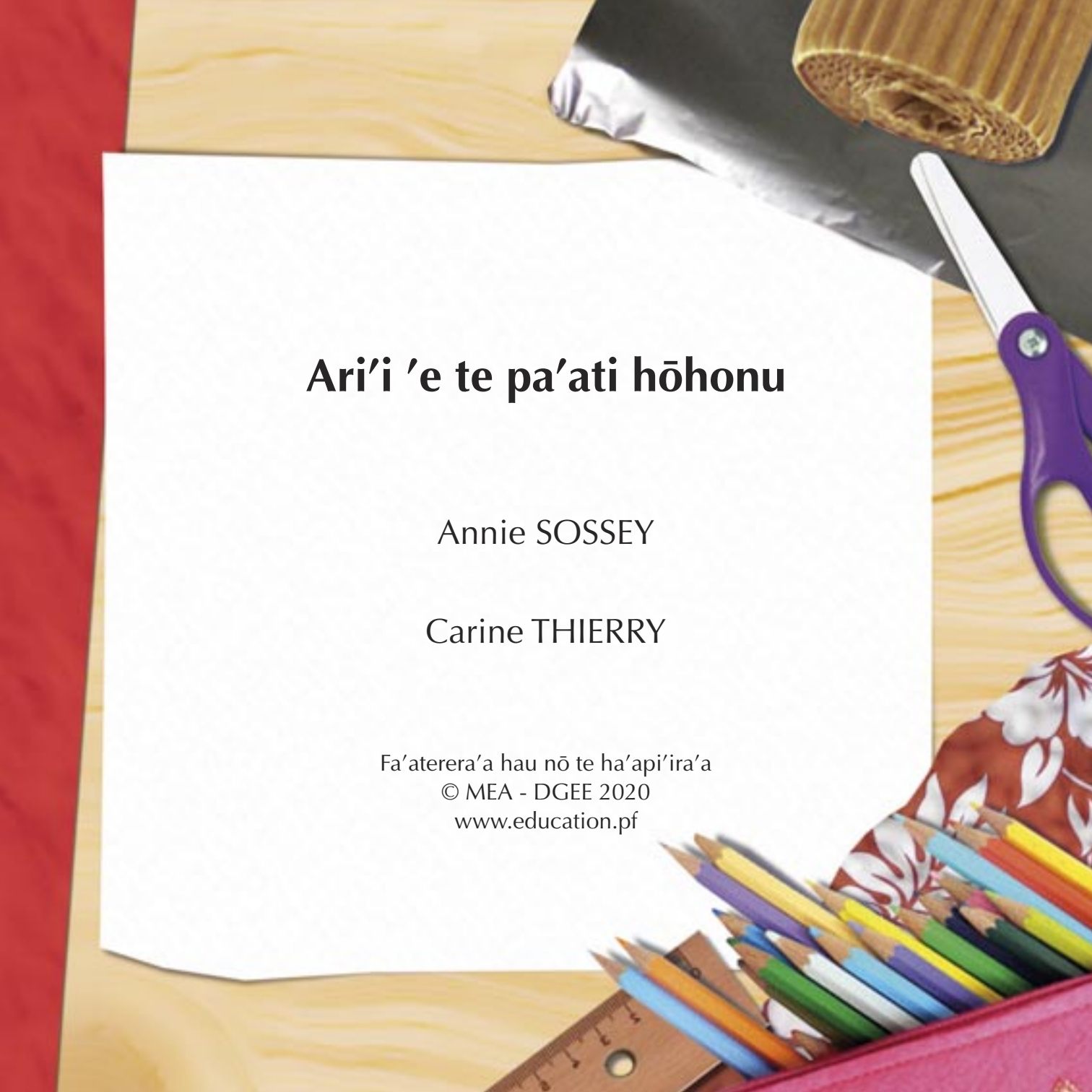



Ari'i 'e te pa'ati hōhonu

Annie SOSSEY

Carine THIERRY

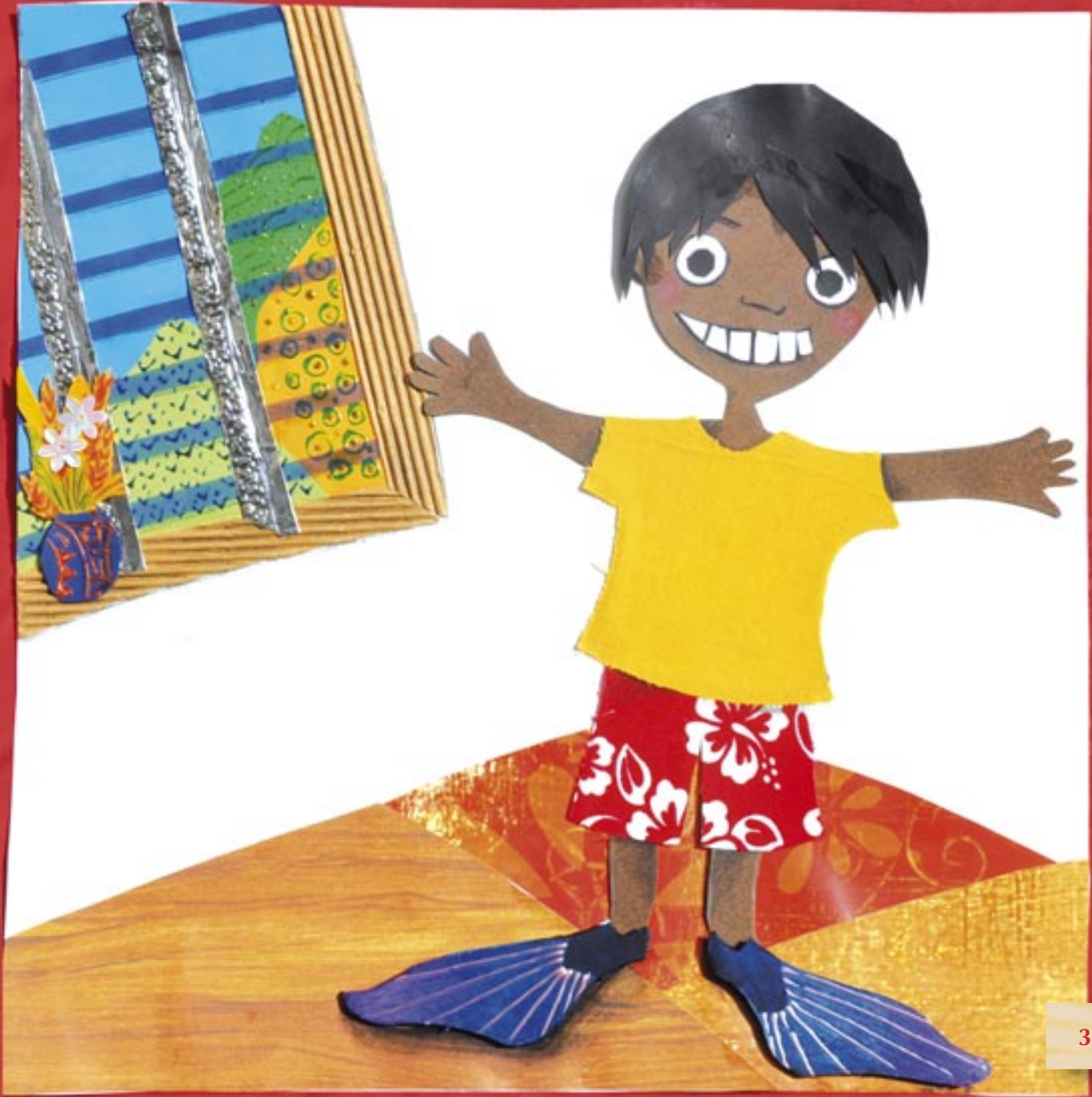
Fa'aterera'a hau nō te ha'api'ira'a
© MEA - DGEE 2020
www.education.pf






'Ua rave 'o Ari'i i te mau 'āvae
mo'orā 'o pāpā.

« **Māmā, 'a hi'o mai na, e pehau
tō'u mai tō te pa'ati hōhonu. »**





'Ua rave 'o Ari'i i te tīti'a mata hopu
'o pāpā.

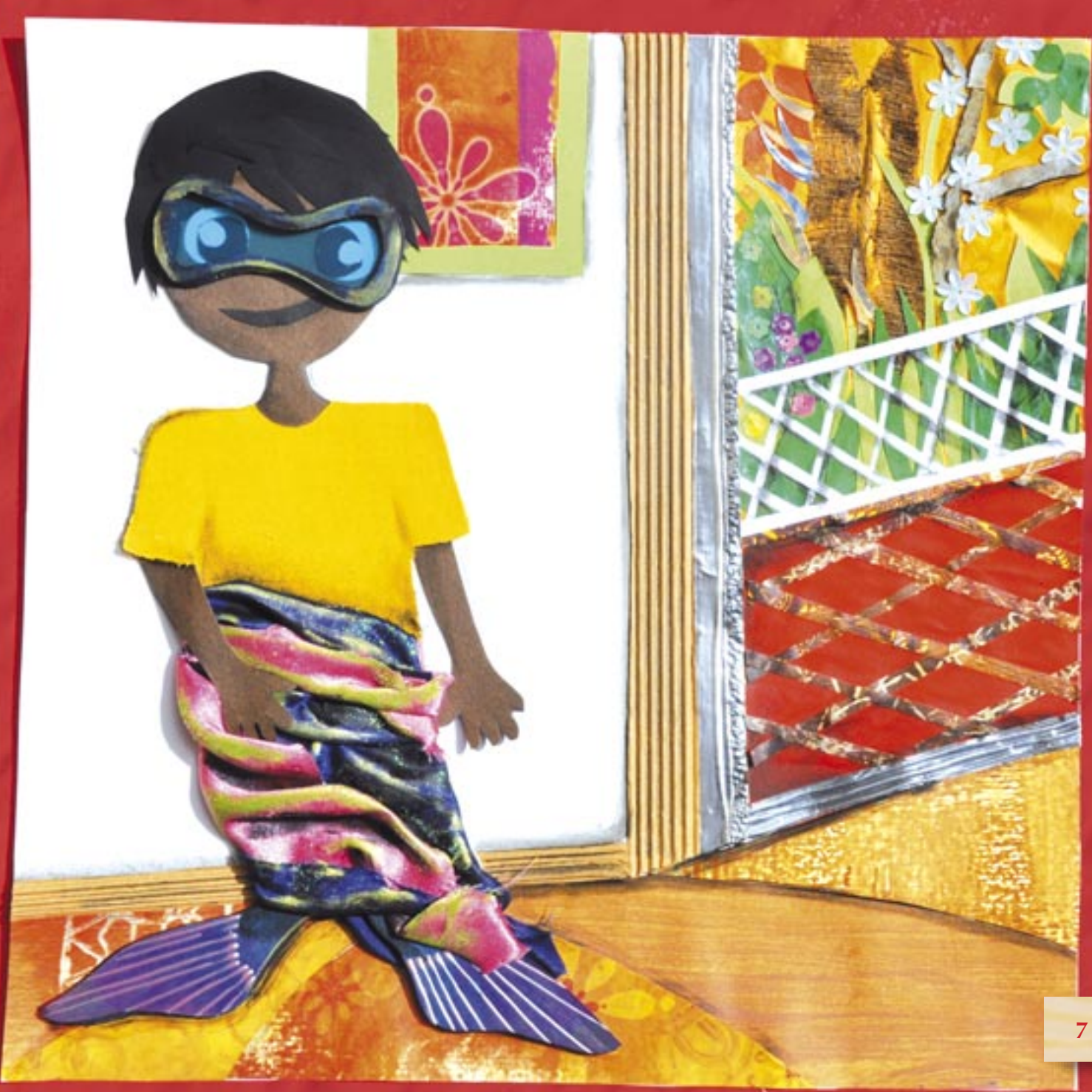
« **Māmā, 'a hi'o mai na, e mata tō'u
mai tō te pa'ati hōhonu. »**

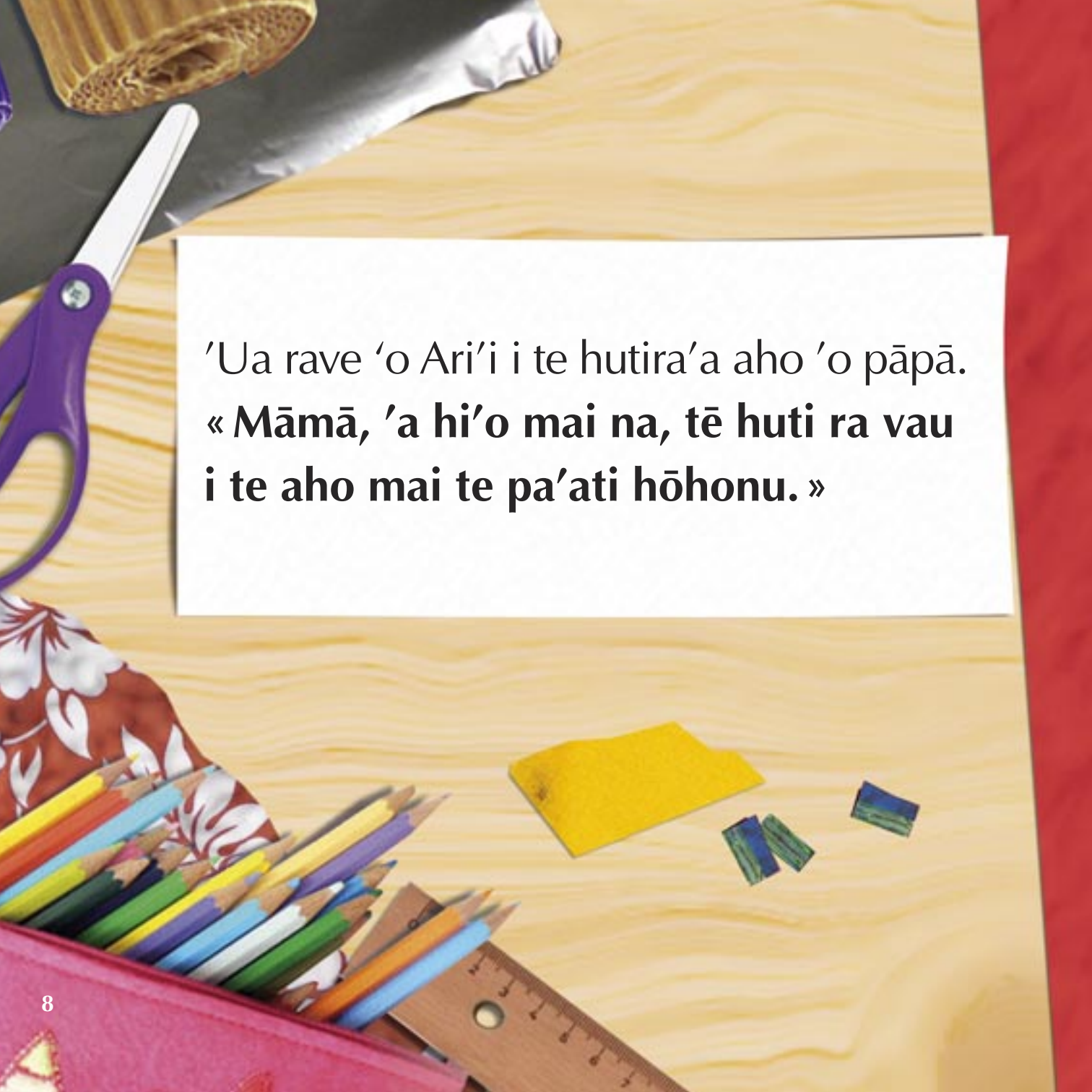




‘Ua tāviriviri ‘o Ari’i i te tāpo’i ro’i i ni’a
i tōna nā ‘āvae.


« **Māmā, ‘a hi’o mai na, tē nu’u ra vau
mai te pa’ati hōhonu. »**



A wooden desk with various school supplies. In the top left, there is a pair of purple-handled scissors and a piece of aluminum foil. In the bottom left, a pink pencil case is partially visible, containing several colored pencils. A wooden ruler is also on the desk. In the center, a white piece of paper contains text in Hawaiian. To the right of the paper, there are some small pieces of yellow and blue paper.

‘Ua rave ‘o Ari’i i te hutira’a aho ‘o pāpā.
« **Māmā, ‘a hi’o mai na, tē huti ra vau
i te aho mai te pa’ati hōhonu.** »



A collection of art supplies is arranged on a light-colored wooden surface. In the top left, a pair of purple-handled scissors is partially visible. Below it, a piece of bread is shown. In the bottom left, a red box contains a variety of colored pencils. A wooden ruler lies horizontally at the bottom. To the right of the ruler, there are several small, rectangular pieces of colored paper or tape in yellow, blue, and green. A white rectangular box with a black border is centered on the page, containing text in Māori.

Tē tunu noa ra 'o māmā i te mā'a 'a
pāhono atu ai iāna : « **E hoa a'e ra e
Ari'i, tē 'āno'i noa ra 'oe i te 'ohipa !** »



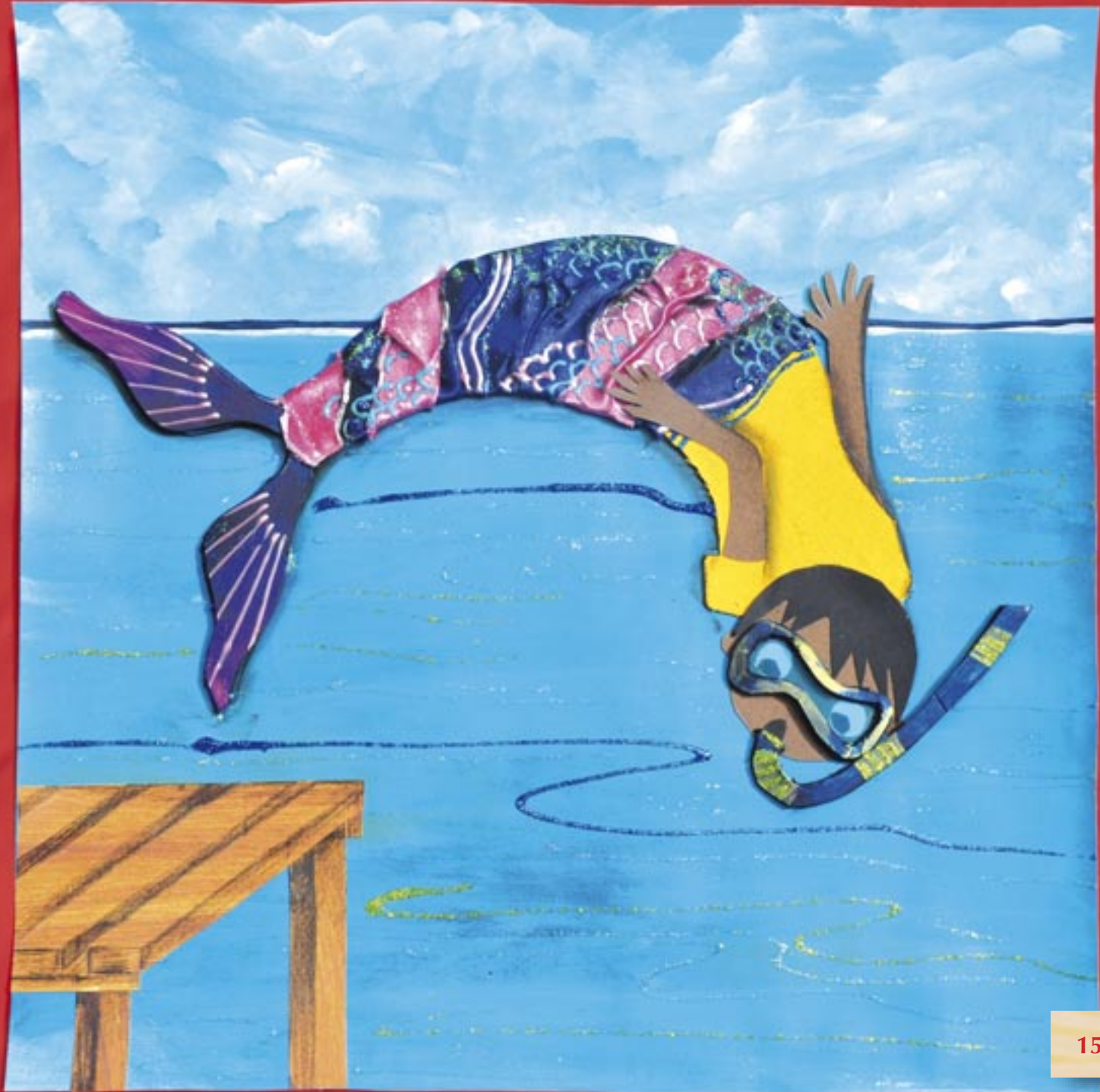
A collage of various craft supplies on a light-colored wooden surface. In the top left, there's a pair of purple-handled scissors and a piece of yellow paper. Below the scissors, a red and white floral patterned object is visible. In the bottom left, a pink box contains a variety of colored pencils. A wooden ruler is partially visible at the bottom right. A white rectangular piece of paper is placed in the center, containing the text 'Tē tāi'a noa ra 'o pāpā i ni'a i te uāhu.'.


Tē tāi'a noa ra 'o pāpā i ni'a i te uāhu.



A collage of various craft supplies is arranged on a light-colored wooden surface. In the top left, a pair of purple-handled scissors is partially visible. Below it, a piece of white paper with a torn edge contains two lines of text in a Polynesian script. To the right of the paper, there is a small, crumpled piece of pink and blue patterned paper. In the bottom left corner, a red box holds a collection of colorful pencils. A wooden ruler is placed horizontally at the bottom of the frame. The background is a solid red color.

Tāpiri mai nei 'o Ari'i i ni'a i te uāhu,
ē, patia upo'o atura i roto i te miti.



The background is a textured blue surface. It features several dark blue wavy lines that resemble ocean waves. In the lower right, there is a white, stylized fish-like shape with a yellow tail. To the left of this shape, there are several white, swirling, dotted patterns that look like bubbles or underwater currents. The overall style is artistic and illustrative.

'Ua 'ī te tīti'a mata hopu i te miti,
ē, eita 'o Ari'i e 'ite fa'ahou.





'Ua 'ī te hutira'a aho i te miti,
ē, eita 'o Ari'i e huti fa'ahou i
te aho.



'Ua tāfifi te 'ahu ta'oto i ni'a i tōna 'āvae,
eita 'o Ari'i e nu'u fa'ahou.



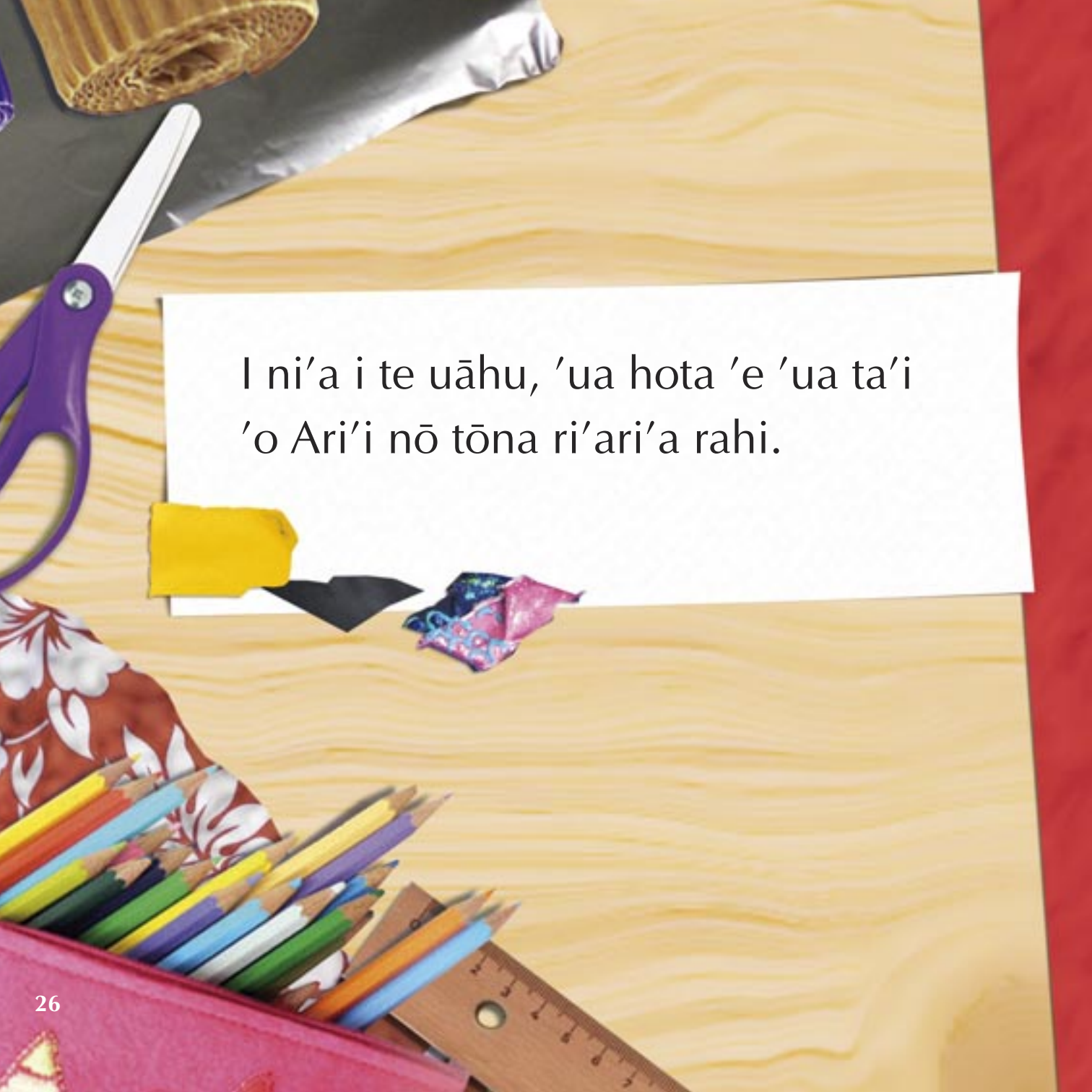
'Ua matara tōna nā 'āvae mo'orā, ē,
'ua hutihia 'o Ari'i i te vāhi hōhonu.



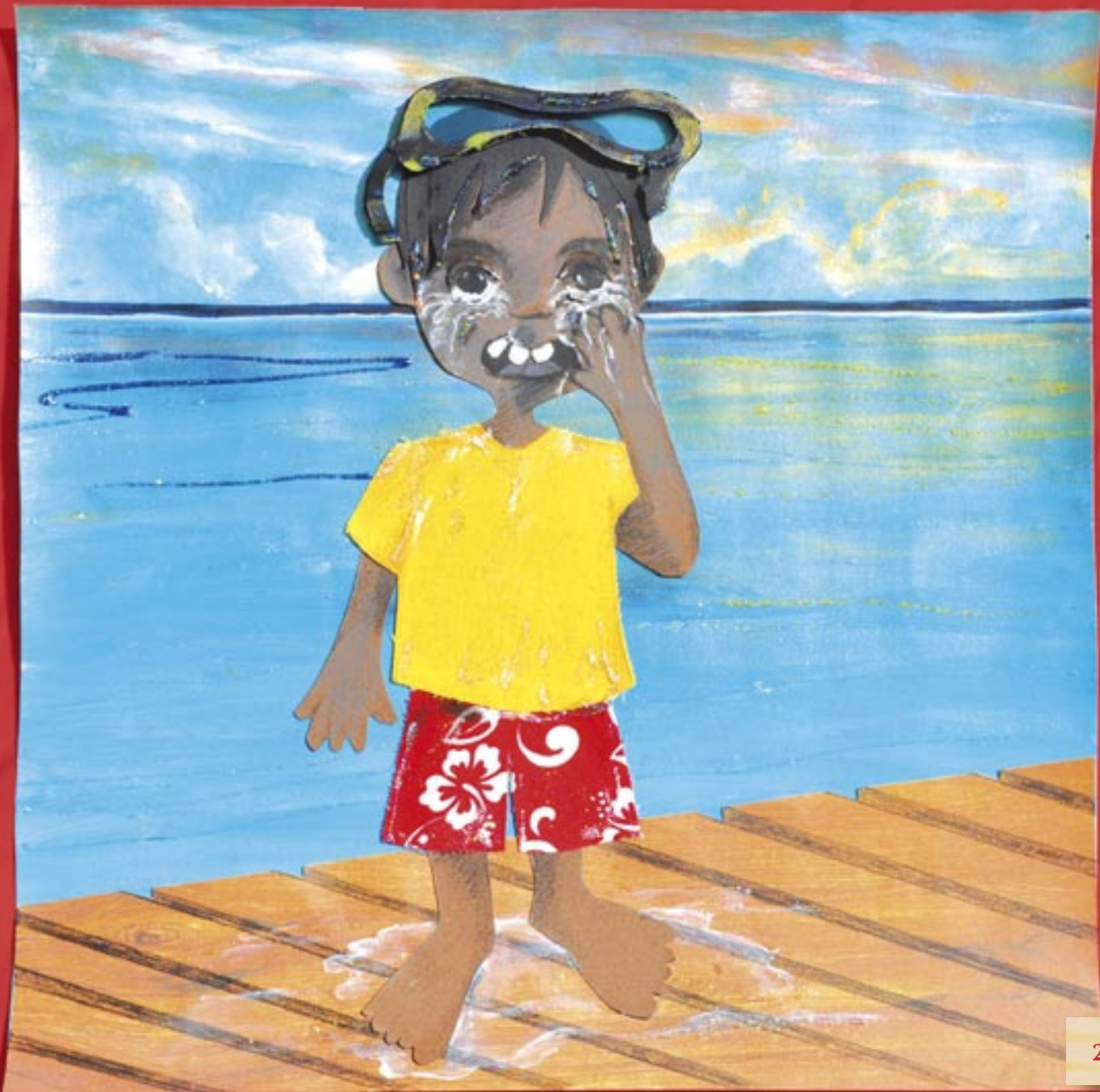



'Ua haru 'o pāpā ia Ari'i.



A collage of various craft supplies on a light-colored wooden surface. In the top left, there's a pair of purple-handled scissors and a piece of yellow paper. Below the scissors, a red and white floral patterned object is visible. In the bottom left, a pink box contains several colored pencils. A wooden ruler is partially visible at the bottom right. A white rectangular piece of paper is placed in the center, containing text in Hawaiian. There are also some crumpled pieces of paper, one pink and one blue, near the center.


I ni'a i te uāhu, 'ua hota 'e 'ua ta'i
'o Ari'i nō tōna ri'ari'a rahi.






'Ua tāmārō 'o pāpā ia Ari'i 'e
'ua tāmārū iāna.



A wooden desk with various school supplies. In the top left, there is a pair of purple-handled scissors and a piece of yellow paper. In the bottom left, there is a red box containing a variety of colored pencils. A wooden ruler is placed horizontally in the bottom right. A white rectangular card with text is centered on the desk. The background is a solid red color.

**« Tē aha ra 'oe e Ari'i ? Tē hina'aro ra
'oe 'ia tae ato'a i roto i tā'u merēti mai
te i'a ra te huru ? » 'o te reo hō'ata ia
'o pāpā.**






'Ua tāmārū 'o pāpā ia Ari'i, ē, 'ua rave
i tāna mau tauiha'a : te pātete 'e tāna
uaua.

'Ua rūrū 'o Ari'i nō te to'eto'e, teie rā,
'ua māhanahana tōna 'ā'au.



A collage of various craft supplies is arranged on a light-colored wooden surface. In the top left, a pair of purple-handled scissors is partially visible. Below it, a piece of white paper with a torn edge contains the text "'Ua ho'i 'o pāpā 'e 'o Ari'i i te fare i te tapera'a mahana." To the left of the paper is a small yellow rectangular piece of paper. Below the paper is a small, crumpled piece of pink and blue patterned paper. In the bottom left, a red box holds a collection of colorful pencils. A wooden ruler is placed horizontally at the bottom of the frame. The entire scene is set against a light wood background with a red border on the right side.

'Ua ho'i 'o pāpā 'e 'o Ari'i i te fare
i te tapera'a mahana.





Perroquet lune

Pa'ati Hōhonu

Scarus forsteni (Bleeker, 1861)

I'a nō te moana nō Pōrīnetia,

Fāito : 37 tenetimētera



'O vai 'ōna ?

Te pa'ati hōhonu

I roto i te raura'a o te mau pa'ati e 'itehia nei i roto i te mau roto ato'a nō Pōrīnetia, tē vai nei te Pa'ati hōhonu. 'Oia mau, 'ua hau i te toru 'ahuru huru pa'ati mai : te uhu mamaria, te tapi'o, te hou 'ere'ere 'aore rā te pa'ati 'ōpū tautau...

Te mau puta nō te ha'amāramaramara'a i ni'a i te mau i'a :

Guide des poissons de Tahiti et ses îles

Philippe Bacchet - Thierry Zysman - Yves Lefèvre

Préface et conseil scientifique

© Au vent des îles - 2006

Poissons de Polynésie

Raymond Bagnis - Philippe Mazelier - Jack Bennett - Erwin Christian avec la collaboration de A. cea Egana, J.P Dubois et J.E Randall

Préface et conseil scientifique

© Société Nouvelles éditions du Pacifique - Times Editions, 1972, 1973, 1976, 1981, 1984.

Ari'i et le perroquet lune

Page 2

Arii a pris les palmes de papa.

« Maman, regarde, j'ai les nageoires du perroquet lune. »

Page 4

Arii a pris le masque de papa.

« Maman, regarde, j'ai les yeux du perroquet lune. »

Page 6

Arii a enroulé un drap autour de ses jambes.

« Maman, regarde, j'avance comme le perroquet lune. »

Page 8

Arii a pris le tuba de papa.

« Maman, regarde, je respire comme un perroquet lune. »

Page 10

« Mais non, Arii, tu confonds tout ! » dit maman en faisant la cuisine.

Page 12

Papa pêche sur le ponton.

Page 14

Arii s'avance sur le ponton et plonge.

Page 16

Le masque se remplit d'eau, Arii ne voit plus rien.

Page 18

Le tuba se remplit d'eau, Arii ne peut plus respirer.

Page 20

Le drap s'entortille autour de ses jambes, Arii ne peut plus avancer.

Page 22

Les palmes se détachent des pieds d'Arii, Arii est entraîné vers le fond.

Page 24

La main forte de papa attrape Arii.

Page 26

Sur le ponton, Arii tousse et pleure, il a eu très peur.

Page 28

Papa essuie Arii et le prend dans ses bras pour le reconforter.

Page 30

« À quoi joues-tu, Arii ? Tu veux vraiment finir dans mon assiette comme un poisson ? » dit papa, en plaisantant.

Page 32

Papa console Arii, puis ramasse son matériel, son seau et son fil de pêche. Arii tremble de froid mais il a chaud au cœur.

Page 34

Arii et papa regagnent tous deux la maison à l'heure du crépuscule.

Page 36

Perroquet lune

Pa'ati Hōhonu

Scarus forsteni (Bleeker, 1861)

Poisson des eaux polynésiennes, taille : 55 cm.

Page 37

Documentaire : Qui est-il ?

Le perroquet lune appelé Pa'ati hōhonu en tahitien fait partie de la grande famille

des perroquets que l'on repère dans les lagons polynésiens. En effet, il existe plus d'une trentaine d'espèces de perroquets portant tous des noms aussi curieux les uns que les autres, on parle par exemple de perroquet lie-de-vin, de perroquet des herbiers, de perroquet tête d'œuf ou de perroquet à gros ventre...

Références bibliographiques pour en savoir plus sur le perroquet lune :

Guide des poissons de Tahiti et ses îles

Philippe Bacchet - Thierry Zysman

- Yves Lefèvre. Préface et conseil scientifique

© Au vent des îles - 2006

Poissons de Polynésie

Raymond Bagnis - Philippe Mazelier - Jack

Bennett - Erwin Christian avec la collabora-

tion de A. cea Egana, J.P Dubois et

J.E Randall - Préface et conseil scientifique

© Société Nouvelles éditions du Pacifique -

Times Editions, 1972, 1973, 1976, 1981,

1984.

4^{ème} de couverture

Être un perroquet lune ? Attention !

Ari'i 'e te pa'ati hōhonu

Pāpa'ihia e
Annie SOSSEY

Tāhōho'ahia e
Carine THIERRY

Hurira'a parau
Tahia TETUANUI-FAUA
Anna RONGOMATE

Fa'a'ohipara'a i te rāve'a roro uira
Heinui LE CAILL

Ra'atira o te nene'ira'a
Mairenui LEONTIEFF

Fa'annahia
i raro a'e i te fa'aterera'a a
Aline-Titihu Heitaa-Archier
IEN, fa'atere nō te pū CRDP

Fa'atere o te nene'ira'a
Jean-Michel GARCIA - DGEE

ISBN 978-2-37317-068-9

Réf. PI-20041

Te ha'aputurā'a o te mau faufa'a fa'aherehere
2020



E pa'ati hōhonu ? 'A ara !

Nā roto i teie puta hōho'a, e tano e fa'a'ohipa i te ture...



TE FANA'ORA'A I TE ORA

'Ia fāna'o te tama i te mau mea hau roa i te maita'i nō tōna orara'a, ei mā'a 'e ei nohora'a.

'Irava ture n°26 'e 27 o te Parau fa'aau o te ti'ara'a mana o te tama

ISBN 978-2-37317-068-9

Réf. PI-20041

© MEA - DGEE 2020

www.education.pf